

NAUTIC

decoessence

HIDRÁULICO | PORCELÁNICO ESMALTADO
HYDRAULIC | GLAZED PORCELAIN TILES
CARREAUX CIMENT | GRES CERAME EMAILLÉ
ZEMENTFLIESE | GLASIERTES FEINSTEINZEUG
ГИДРАВЛИКА | КЕРАМОГРАНИТ ГЛАЗУРОВАННЫЙ

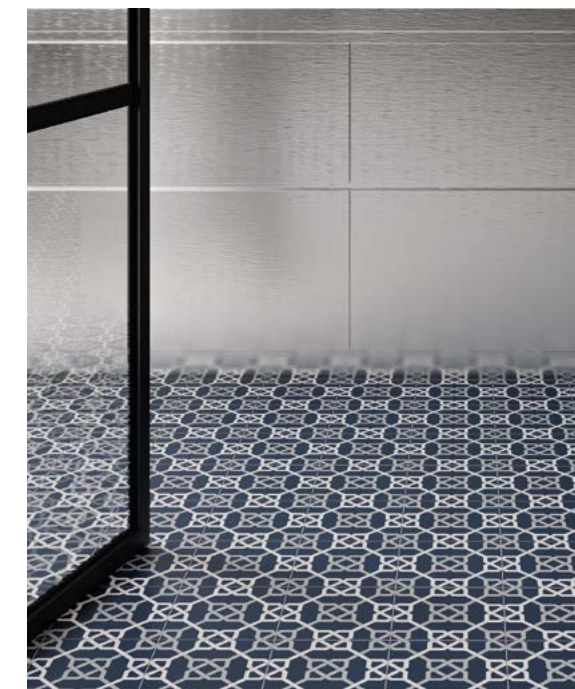
33,15x33,15 cm / 13,1"x13,1"
16,5x16,5 cm / 6,5"x6,5"



Taco Nautic Black 16,5x16,5 / 6,5"x6,5"



Taco Nautic Blue 16,5x16,5 / 6,5"x6,5"



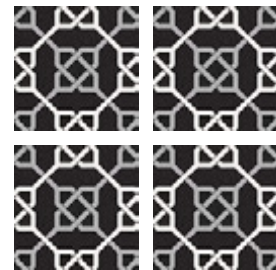
Taco Nautic Blue 16,5x16,5 / 6,5"x6,5"



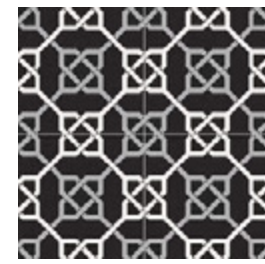
Taco Nautic Black 16,5x16,5 / 6,5"x6,5" · Brick Neutral Blanco 11x33,15 / 4,3"x13,1"

HIDRÁULICO | PORCELÁNICO ESMALTADO
HYDRAULIC | GLAZED PORCELAIN TILES
CARREAUX CIMENT | GRES CERAME EMAILLÉ
ZEMENTFLIESE | GLASIERTES FEINSTEINZEUG
ГИДРАВЛИКА | КЕРАМОГРАНИТ ГЛАЗУРОВАННЫЙ

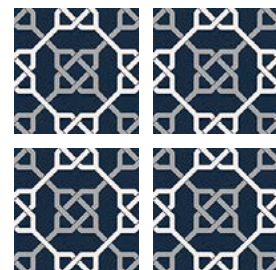
33,15x33,15 cm / 13,1"x13,1"
16,5x16,5 cm / 6,5"x6,5"



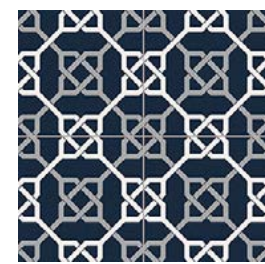
Taco **GF-20305D**
Nautic Black
16,5x16,5 cm / 6,5"x6,5"



Nautic Black **GF-20300D**
33,15x33,15 / 13,1"x13,1"



Taco **GF-20305D**
Nautic Blue
16,5x16,5 cm / 6,5"x6,5"



Nautic Blue **GF-20300D**
33,15x33,15 / 13,1"x13,1"



Taco Nautic Black 16,5x16,5 / 6,5"x6,5"



FRÖST-PROOF



MATTE

CARACTERÍSTICAS TÉCNICAS
TECHNICAL DATA
CARACTÉRISTIQUES TECHNIQUES
TECHNISCHE CHARAKTERISTIKEN
ТЕХНИЧЕСКАЯ ХАРАКТЕРИСТИКА

COLOR	FLEXIÓN ISO-10545-4	DUREZA MOHS/EN-101	ABRASIÓN-PEI ISO-10545-7	CUARTEO ISO-10545-11	RESISTENCIA AL ATAQUE QUÍMICO (ISO-10545-13)				R. HELADA ISO-10545-12	DESPLIZAMIENTO DIN 51130-R	DESPLIZAMIENTO UNE-ENV 12633	DCOF ANSI A137.1	CLASIFICACIÓN GAYAFORES
					MANCHAS	AGENTES LIMPIEZA	ADITIVOS PISCINAS	ÁCIDOS/BASES					
NAUTIC BLACK	≥ 35	5	II	CUMPLE	5	A	A	LA/HA	CUMPLE	R-9	C1	0,42 ≤ DCOF < 0,60	B
NAUTIC BLUE	≥ 35	5	II	CUMPLE	5	A	A	LA/HA	CUMPLE	R-9	C1	0,42 ≤ DCOF < 0,60	B

DESARROLLO GRÁFICO
GRAPHIC DEVELOPMENT
DÉVELOPPEMENT GRAPHIQUE
GRAFISCHE VIELFALT
ГРАФИЧЕСКОЕ РАЗВИТИЕ

33,15x33,15 / 1 pattern

16,5x16,5 / 1 pattern

PACKING LIST

FORMATO	ESPOSOR	ARTÍCULO	PZS / CJ	M2 / CJ	CJ / PAL	M2 / PAL	KG / CJ	KG / M2	KG / PAL
33,15x33,15	7,5	NAUTIC	12	1,32	48	63,36	22,0	16,7	1058
16,5x16,5	7,5	TACO NAUTIC	20	0,55	108	59,4	9,2	16,7	992